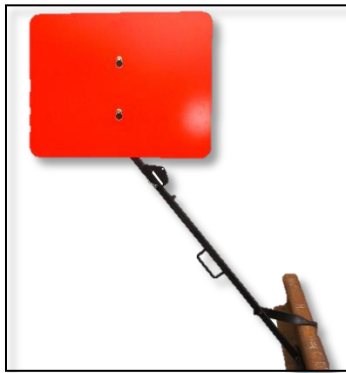
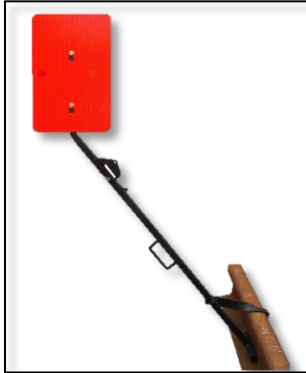




Lightweight Rail Mounted Folding Flag Stand Part: 2310037FS



Technical Data:

- Make: IPS
Weight: 11.0 lbs.
Dim.: 8" x 12" x 38-1/2" (folded)
8" x 12" x 58" (extended)
- manufactured from high strength, 1" square steel tube
 - equipped with keeper pin
 - Pin allows staff to be locked in either upright or folded position
 - 8" center mounting bolts allow multiple flag attachments and orientations

Description: An economical and lightweight rail mounted folding flag stand designed to be used with multiple flag attachments and orientations. Quick and simple to attach and remove from any 100 - 141 lb. rail. Designed for use with the 2310027R Red Aluminum Flag (22" x 28") or the 2310027UR Red Aluminum Universal Flag (18" x 12").

