



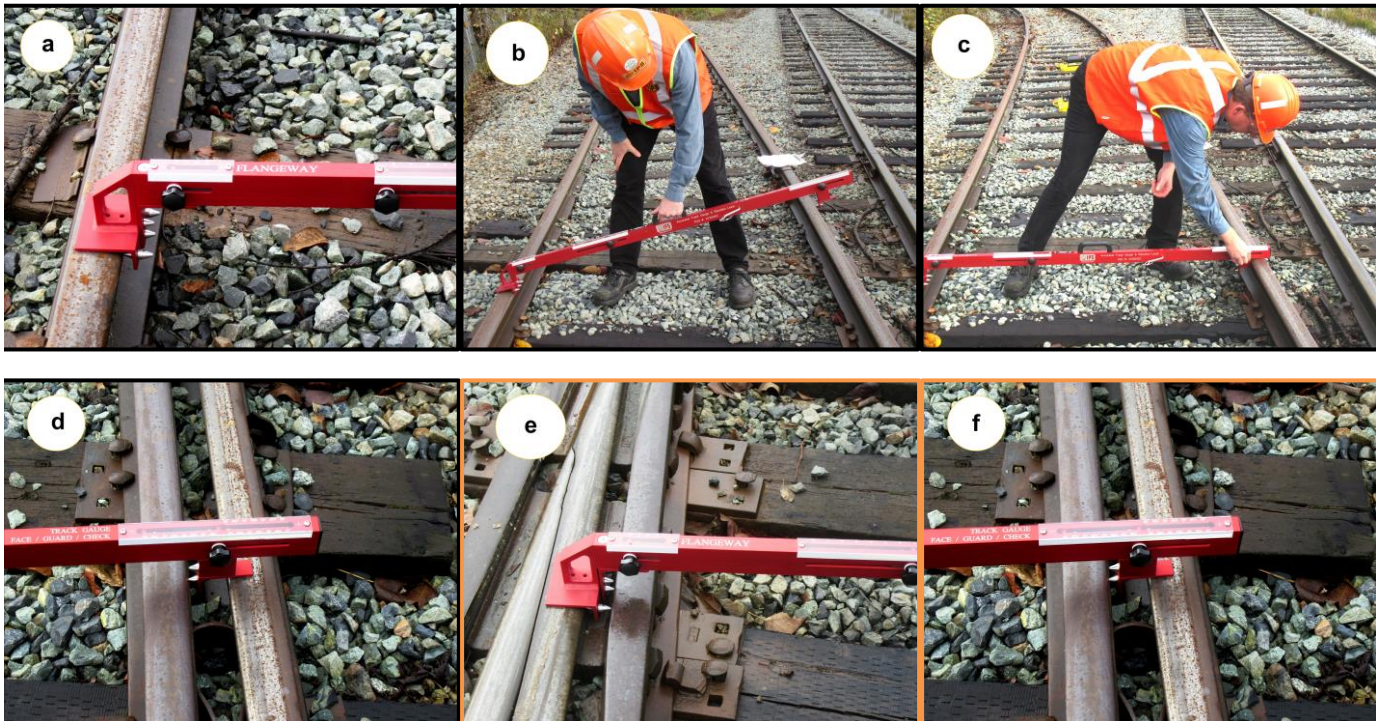
Accuratus Level/Elevation Rail Gauger

Part # 2310030C



Measuring Track Gauge:

- Position wide (fixed) end of Gauge bar against rail.
- Lower gauge into place perpendicularly to rail.
- Using slide knob at measuring (thin) end of Gauge bar, extend bar until contact is made and tighten gently.
- Read measurement on gauge end.



Measuring Guard/Guard Face Gauge:

- As with track gauge measurement, but place wide (fixed) end against frog gauge line and lower into place.
- Use slide knob at measuring (thin) end of gauge rod and tighten knob loosely at contact point and read measurement.



Accuratus Level/Elevation Rail Gauger

Part # 2310030C

Two-Part Gauge Bar Assembly:



- Remove Allen wrench from Accuratus handle, and use wrench to remove placement bolts on handle side of Gauge. (*It is inadvisable to remove bolts from the measuring (thin) side of gauge unless replacing insulating joint).
- Slide joint into mounting socket, and lock into place with two Allen socket bolts.
- Fully insert additional cam-lock pin (attached on lanyard) into side hole and rotate until firmly locked. To disassemble for transport reverse these steps. Re-insert Allen socket bolts after disassembly to avoid losing them.



Level and Elevation Checking: (+8" to -2")

Position wide (fixed) end of gauge bar against low side rail and secure in place.

Inset spirit level can be used either i) to measure current elevation of rails by sliding levelling knob, or ii) lock knob into place at desired elevation level and use spirit level to determine when correct rail level is achieved.

